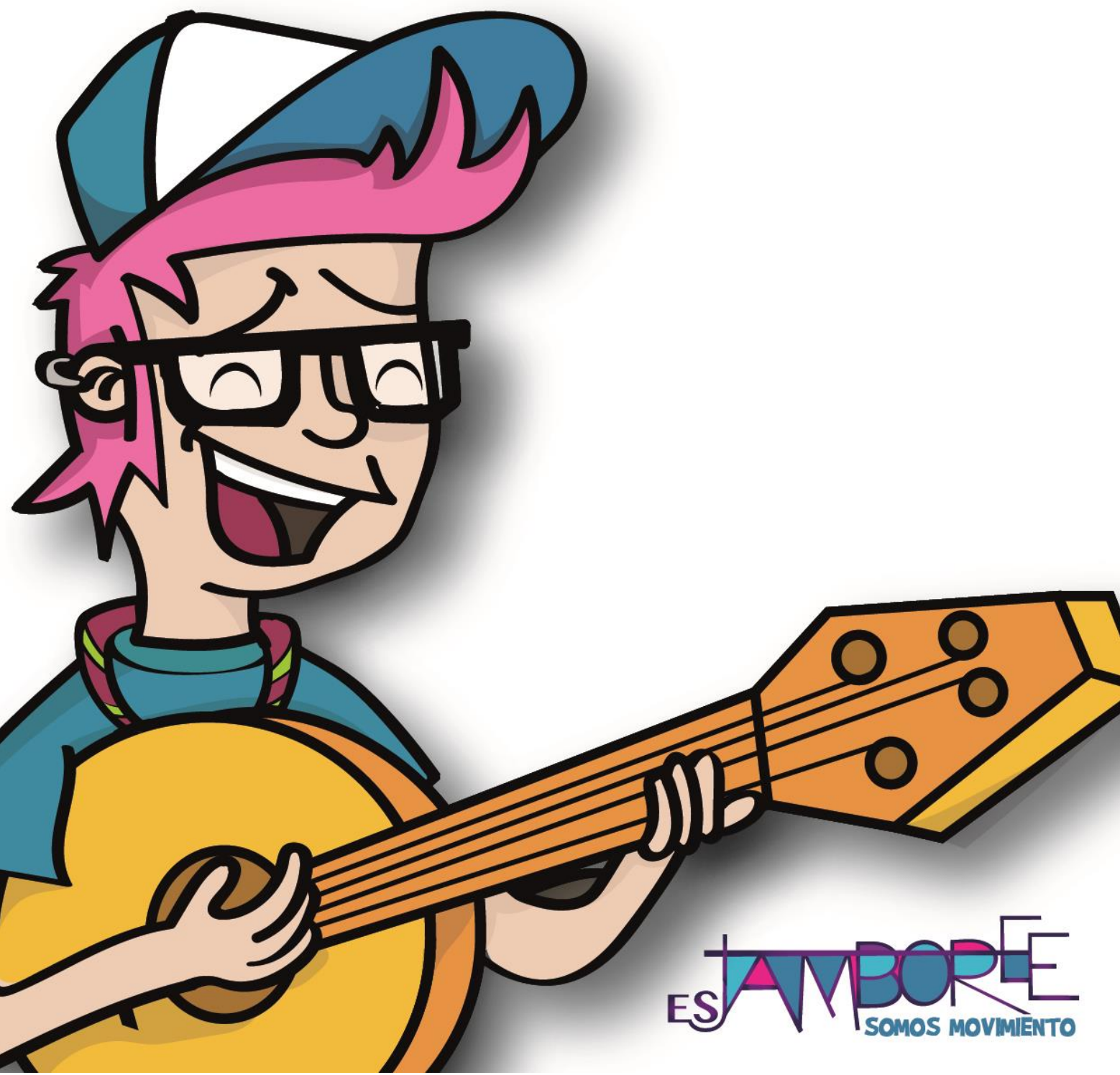




TIPS AND INSTRUCTIONS FOR SECURITY

www.scout.es/esjamboree

seguridad.esjamboree@scout.es





Tips for going to the mountain

- Do inform your friends / relatives about the route you are taking before departure.
- Never go on your own to the mountain (go with someone else).
- Get information about the climate conditions and the weather forecast in the area, and bring a map with you. It would be great if someone in the group knows the surroundings.
- It is important to know your own limits and that you don't try to do higher risk activities than the ones you can do. You can try it another time. Remember that the level of the group is the one that the weakest person can assume.
- You have to bear in mind the estimated duration of the hike and the height of the slope in order to value the difficulty of the activity.
- Be even more cautious when you are with children, never leaving them alone, especially if there are risk spots.
- Always bring something to communicate in case of emergency (mobile phone, a radio, or even a whistle) and also a first aid-kit with some bandages and ibuprofen.
- Clothes, shoes and equipment has to be adequate for the activity we are going to do.
- You should not go out of the marked paths and roads.
- Never shout in the interior of ravines due to danger of rocks fall.
- Do not sleep in the deep zone of a ravine, or in very dense vegetation areas where a fire can get started.
- If bad weather surprises you, do not go under rough terrains.
- If someone suffers an accident, do not move him/her, call 112 (emergencies) and wait for the rescue team to arrive.
- Keep calm and try to make the hurt person calmed as well.
- Keep the person with heat with any clothes you have with you.
- Once the rescue teams are called, try that someone stays in a visible place and moving some colorful clothing in the air so that it can be seen from the air.
- If you are disoriented, keep calm, take another look at the maps, and to go a higher spot from where you see wider landscapes.

Tips for the beach

- We have to choose well what kind of beach we want to go to, depending on how well we can swim, our age, if we go with children, etc.
- If we are not expert swimmers, or if we go in a family, we should choose a tranquil beach, accessible, with SOS/lifeguards services.
- We should check if there is any chance of meteorological alert through @112canarias, or other media.
- If there is an alert, it would be better to leave the beach for a different day.
- We should not jump in not very deep areas.
- If you have drunk alcohol or drugs, you should not swim.
- In windy days or in areas with water currents, do not use inflatable objects that can put you away from the shore.



- If you observe from the beach that someone is in the need of help, don't go to rescue the person, but call immediately the emergencies phone 112. You can through the person a floating object if you have it with you.

In beaches with no signals or SOS services:

- Do not swim on your own, go with someone else to the beach.
- Ask around to the locals or to surfers, if there were any, which are the dangerous areas in the beach.
- Enter the water slowly, checking how deep it is.
- Swim in a parallel way of the shore, in a depth not superior to your own height, especially when there may be sea current that may bring you to the offshore.

In beaches with SOS services:

- Be aware of specific areas for water sports. Hay que estar atentos a si hay zonas específicas para deportes acuáticos.
- Remember the colors of the flags: If there is a green flag, we can swim, if its yellow, we can swim with some precaution, and if it is a red flag, we cannot get in the water.
- Watch out for lifeguards advices, always respecting them.
- If you are in trouble or you feel bad, try to go out of the water, and if you cannot, move your arms so that someone can see you, and keep calm.

With all these advices, we hope you enjoy in your free time in the Canary beaches. The Canary Government has for your information a website, a twitter account @112canarias, and the information number 012.

Only when there is an emergency situation, you may use the telephone 1-1-2.

TRANSPORTATION SAFETY

On a boat

The docks of the ports of La Luz, Las Palmas and Santa Cruz de Tenerife, are port facilities with a high volume of activity, where trucks, people, machines and other vehicles in general can generate a risk situation, which is why we should adopt the following security measures:

Before boarding:

- We will try to be in a quite significant distance from the traffic when landing of buses.
- Two hours before boarding, take, if needed, the medicines to prevent seasickness.
- You will organize an area close to the boarding offices where you can wait for the tickets and to get ready for boarding.



- You will arrange a row to go into the boat.
- Handbags, coats and other objects must be with yourself. Las mochilas de mano, abrigos y demás irán asegurados al cuerpo.

During the boat trip:

- Follow the boat crew indications.
- Participants have to be sit in their sits during the berthing and unberthing manoeuvres.
- Scout Leaders have to go with the minors to the ship deck, not leaving them alone. Taking care of them if they may feel seasickness.
- The ship company or the organization are not responsible of losing technical/personal items. They must be with their owners all the time.
- When arriving to the port, the staff and Scout Leaders will be available and helping so that there will not be scouts left in the ship.
- All the scouts will be leaded down the stairs to earth. A row will be arranged if needed, for landing.

Getting out of the boat:

- You will organize an area far from the traffic, for the landing and for waiting for the buses.
- Be sure of the number of scouts under the responsibility of the Unit, checking that nobody is in the boat.
- Make a row to go to the buses.
- Some Scout Leaders will be controlling the traffic around that may come close to the scouts, and in moments of low visibility, they will wear reflective jackets.

In the bus:

The vehicles of road-transport for passengers are very safe, they have a wide range of safety measures, and their drivers are experts, so we will try to help them the best we can, following these instructions:

Before boarding:

- The parking and collection will be far from the traffic.
- We will check and count that all the scouts are in the vehicle.
- We will collaborate with the indications of the driver, to filling the luggage compartment.
- All the scouts will be far enough from the luggage compartment's doors so that they are not kicked.

During the trip

- All the participants will be seated down in their sits, and if the driver doesn't like it, please do not sing inside the bus.



- We will bring some plastic bags in case that someone gets sick and vomits inside the bus.

Getting out of the bus

- The parking and collection will be far from the traffic.
- All the scouts will be far enough from the luggage compartment's doors so that they are not kicked.
- We will help, following the driver's instruction, in taking out all the luggage.
- Double check and count so that you are sure that all the scouts travelling in the bus are now in the outside.

SECURITY INSTRUCTIONS

Walking in roads that are not in urban centres

On roads

- On the roads, we will walk in the left hand side of the pavement where we are circulating.
- In the beginning and in the end of the rows, there will be a Scout Leader with a reflective jacket.
- We will walk in indian line. Each 25 meters, a Scout Leader will be located to check that there is a one row (indian line).
- The Scout Leaders will indicate the vehicles that may be on the road to slow down their speed, with the arm up and down.
- When arriving to the point where we have to leave the road, and keep the walk through a path, the second Scout Leader goes out of the row and waits in the exit point to watch out that all of the scouts are getting there and there are no scouts in the road.

Crossing through paths in intersection with roads

- Two Scout Leaders are ahead of the trail route and enter the road wearing reflective jackets, each of them facing one of the circulating directions, so that each of them can give advice in a distance of 50 meters to the crossing point of the trail route. Both of them will gesture to the vehicles so that they slow down when approaching the group.
- The two Scout Leaders situated in the road will tell the heading of the group to continue walking through the crossing point when there are no vehicles circulating.
- In case of being forced to stop the vehicles traffic, we will try that no more than 5 vehicles are in a row each time, stopping the trail and re-starting it again intermittently, and we will always tell about the maneuver to the Scout Leader that is in controlling the trail row.



- The group will continue walking when the vehicles are not passing by. The 2 Scout Leaders will remain in the road to direct the traffic and the trail, as described in the paragraph above.
- Once the whole group has passed, the 2 Scout Leaders will leave the road and will go to their positions within the row.

Walking in the urban centers

- When possible, we have to do our walking in pedestrian streets, always respecting the volume of participants according to the width of the street, so that we can leave the other pedestrians some space too.
- When arriving to a crossing point/intersection, we will stop to allow the vehicles to circulate, although, if needed, we would stop the traffic (in a proper way). We will try to walk always through pedestrian walks regulated by traffic lights (or without them).
- When we are walking in roads with vehicles, follow these indications:

Crossings by road

- We will always try to walk on the sidewalks.
- We will not put more people than allowed in the width of sidewalks, so that our participants don't go/fall on the roads.
- We will stop in the crossing points/intersections when we get to them until no more vehicles are circulating. If we need to interrupt the traffic, we will do it in the least time possible, advising the cars and using clothes that are reflective.
- The rows will have Scout Leaders every 20 meters to control the flow of participant pedestrians.

Pedestrian Crossings

- Always evaluate the possible transit of authorized vehicles in pedestrian ways to allow their passage and avoid accidents.
- When leaving the areas of pedestrian paths and converging in roads, we will organize the group for the passage through vehicles roads.
- Be sure and review that nobody is behind in shops or other places, so that everyone is in the group.

INSTRUCTIONS FOR EMERGENCIES

Emergencies in open spaces

Scouts/ attending audiences

- Always keep calm, there is an Emergencies Plan for each situation.
- Follow the indications of the staff of EsJamboree.
- Help with the evacuation of the place by not stopping in the ways that lead to safe areas.
- Help to any scout that may needs it, even if it is a help to keep calmed.
- Do not stop when you arrive to streets or spaces with less concentration.



IST/ Organization/ Scout Leaders

- If you are a Scout Leader, keep your group in sight keeping calmed and giving them instructions for the evacuation in case of emergency.
- Help with the evacuation of the members of your group, making them to be in a row.
- Help when you are outside, following the indications of the security crew.
- When you get to a safe place, review so that all the members in your group are there too, and tell the security staff if there is someone missing.

Emergencies in closed spaces

Scouts/ attending audiences

- It is important to keep calmed in every moment, there is an existent Emergencies Plan.
- Follow the indications of the staff from EsJamboree, because in the closed space there are areas enabled as safe spaces.
- Help with the evacuation by not stopping in the ways to the safety areas. Keep yourself in your area until the next one is evacuated. Do not run.
- Help to any scout that may needs it, even if it is a help to keep calmed.
- If there is smoke, get down while you walk and cover your nose, even if it is with a foulard.
- Do not stop when you arrive to streets or spaces with less concentration.

IST/ organization/ Scout Leaders

- If you are a Scout Leader, keep your group in sight keeping calmed and giving them instructions for the evacuation in case of emergency.
- Follow the steps of the Emergency Plan if you are part of the staff assigned to the emergencies team.
- Help with the evacuation of the members of your group, making them to be in a row. Keep in your area until the next one is evacuated.
- If included in the Plan, help with the risk control duties, evacuation and first aids.
- Help them to get to the open space following the indications of the Security Staff Members, keeping in your area until the following one is evacuated.
- When you get to a safe place, review so that all the members in your group are there too, and tell the security staff if there is someone missing.

Now that you have read all these tips and instructions for security of the EsJamboree, is the time to check what you have learnt. You can do it through [this test](#).