

Uusikaiku 2026 INTERNATIONAL PARTICIPANT LETTER 1

Have you been dreaming of a true Nordic forest experience? The wait is over! We are thrilled to invite you to join Kaiku 2026, the 10th district camp of the Guides and Scouts of the district of Uusimaa.

What is Kaiku 2026?

Kaiku 2026 will be held from July 10 to July 18, 2026 in the beautiful Evo camping area in Southern Finland.

It is important to know that Kaiku is an District Camp, not a Finnjamboree. This means that most of the Finnish participants at Kaiku are mainly from Uusimaa scouting district. Guides and Scouts of the district of Uusimaa are part of Guides and Scouts of Finland. Guides and Scouts of Finland is part of both WOSM and WAGGGS so everyone is welcome to our camp no matter their gender.

You will not be isolated in a separate international subcamp. Instead, you will live in a Camp Unit together with local Finnish scout groups. You will sleep, eat, and participate in the program side-by-side with Finnish scouts. This is your chance to make genuine local friends!

WELCOME TO THE FOREST!

Registration for Kaiku 2026 Opens January 13th



Who can participate?



Kaiku 2026 is open to scouts of all ages. For Finnish participants there is going to be cub scouts and adventurers participating on the camp as well as trackers, explorers, rovers and adults. For international participants age limit is 12 year old. So for international participants everyone over the age of 12 is welcome to participate to Kaiku district camp. Here is how the camp works for different age groups:

- **TRACKERS (12–15 YEARS):** Full camp program participation with your Camp Unit.
- **EXPLORERS (15–17 YEARS):** A mix of program and volunteering. You will typically spend most of your time in activities and few work shifts doing small volunteer tasks to help the camp run smoothly.
- **ROVERS (18–25 YEARS) & ADULTS:** You will have a volunteer role (pest) at the camp, ensuring a great experience for the younger ones. Don't worry, you will also have your own activities and free time!

IMPORTANT RULES:

- **SAFETY RATIO:** Every group must have at least one adult (18+) for every 8 underage participants. Groups without enough leaders cannot be accepted.
- **RULES AND REGULATIONS:** On the Kaiku 2026 website you will find the camp rules. When you register for the camp you commit to follow the camp rules.

 **Camp rules**



Official registration is open

JANUARY 13 – FEBRUARY 19, 2026



HOW TO REGISTER:

Please use the specific registration link for international guests below. Do not use the Finnish registration forms found on the main website. On the Kaiku 2026 websites international participants page is also registration link for international participants. The registration is done in group registration, so one member of the group does the registration for the whole group. If you are solo scout you will also use the same registration link. You can find the registration instructions on the Kaiku 2026 website under international participants. Please do keep in mind that stipends are only for Finnish scouts. Some of the information on the website may be only for Finnish scouts so if you see conflicting information or you are not sure if it concerns international participants, don't hesitate to send us a message.

 [Register here](#)

Note: Please use this specific link for international guests. If you see conflicting dates or links on our website FAQ, please ignore them. Registration is definitely open now!

Payment

The international participants payment is done through invoice. After you have done the registration you will receive invoice of the camp fee. The camp fee needs to be paid so that you can participate in the camp. If you need Visa to arrive to Finland, you can pay the invoice after you have gotten your Visa. We ask that you will update us on your Visa process so that we can better keep track of the paid camp fees.

The camp fee for international participants is:

350 €



WHY IS THIS DIFFERENT FROM SOME PRICES ON THE WEBSITE?

You might see a lower fee (€270) listed on our website. That price is for local participants and does not include equipment or airport logistics.

YOUR INTERNATIONAL FEE (€350) IS AN ALL-INCLUSIVE PACKAGE:

- **ACCOMMODATION:** We provide the tents (locals bring their own).
- **TRANSPORTATION:** Bus transport from Helsinki Airport (HEL) to the camp and back. We provide the transport on 10 of July and 18 of July.
- **FULL EXPERIENCE:** Food, program and Finnish camp experience.



Travel, Visas & Insurance

IMAGE: TANGUY GÉRÔME

To ensure a smooth journey to Finland, please read the following advice from our Logistics Team carefully.

VISAS

Check if you need a visa or travel authorization to enter Finland. Requirements vary by country. If you need any documents to enter Finland, please start your application process right now. You can verify the requirements for your country at the Ministry for Foreign Affairs website:

 [Ministry for Foreign Affairs](#)

INSURANCE

The camp fee includes basic Finnish Scout Insurance (partiovakuutus), which covers accidents during the camp.

IMPORTANT: This insurance is secondary and covers only basic needs at the campsite. It does not cover illness, lost luggage, or travel cancellations. We highly recommend getting your own comprehensive Travel Insurance with wide coverage for the whole trip.

BOOKING YOUR TRAVEL

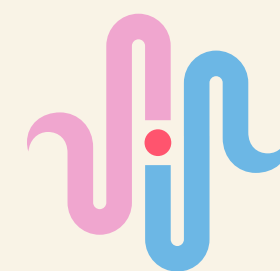
- **AIRPORTS:** We provide bus transport only from Helsinki-Vantaa Airport (HEL).
- **FERRIES:** We provide bus transport only from Katajanokka Harbour.
- **WARNING:** Helsinki has multiple harbours (West Terminal, Olympia Terminal, etc.). If you arrive at another harbour, you must make your own way to the meeting point.
- **TICKETS:** Before booking, check the terms for cancellations and changes. The cheapest tickets are often non-refundable. Cancellations follow the camp's cancellation policy (details on website).
- **CONNECTIONS:** If you have connecting flights, ensure the transfer time is long enough, especially if booked on separate tickets.

TRAVEL SURVEY

Once you have a preliminary plan on your travel, please fill out our survey so we can schedule the buses. The travel plan survey is open 13.1-21.2.2026:

 [To survey](#)

Life in the Forest: What to Expect



Here is a closer look at the daily life in Evo, so you know what to prepare for.

SLEEPING & TENTS

The camp is built in the middle of the forest. Tents are pitched quite close to each other to create a tight-knit village atmosphere.

- **ARRANGEMENTS:** We will provide the tents, but if you want to bring your own tents you can.
- **BEDDING:** We provide the tent, but you need to bring your own sleeping bag and sleeping mat.

HYGIENE

Good news! Even in the forest, we have warm showers and traditional Finnish saunas. Showers have gender-separated dressing rooms, and individual washrooms are also available.

ELECTRICITY

Electricity is very limited in the forest. We cannot guarantee daily phone charging. Please bring a high-capacity power bank (e.g., 20,000 mAh) to keep your phone alive.

FOOD & SAFETY

We eat in a large field canteen. We provide filling and warm meals (breakfast, lunch, dinner, evening snack).

- **ALLERGIES:** We take food safety seriously. We have a separate kitchen for severe allergies. Vegan, vegetarian, and religious diets are fully catered for – just remember to mention them in the registration form!
- **ACTION:** You must bring your own durable plate, mug, and cutlery. Dishwashing is done by participants at outdoor stations.

July 17 A TYPICAL DAY

- **08:00:** Wake up and breakfast together.
- **MORNING:** Program activities for Trackers and Adventurers. Rovers/Adults head to their volunteer shifts.
- **LUNCH:** Served from the field kitchen.
- **AFTERNOON:** More program activities, swimming shifts, sauna, and free time.
- **DINNER:** Served in the evening.
- **NIGHT:** Evening program, parties, campfires, or just hanging out before lights out.

CONTACT US

If you have any questions regarding registration or the camp, please do not hesitate to contact us.

EMAIL: international.kaiku2026@partio.fi

WEBSITE & FAQ: kaiku2026.fi/en/kansainvaliset-osallistujat

WE CAN'T WAIT TO SEE YOU IN THE FOREST!

Best regards,

The Kaiku 2026 International Team (Volunteer)

Katri, Minsku, Eino, Joona, Tomi & Säde

